

-

,

.

,

.

.

.

EPC

1.

EPC

EPC¹ e

,

,

(, , .),

2.

, EPC

,

,

,

,

.

,

¹ EPC-Electronic Product Code,

² : http://www.gs1bg.org/lang_bg/services.php?menu=2,1,13,0,0#faq21

EPC

EPC

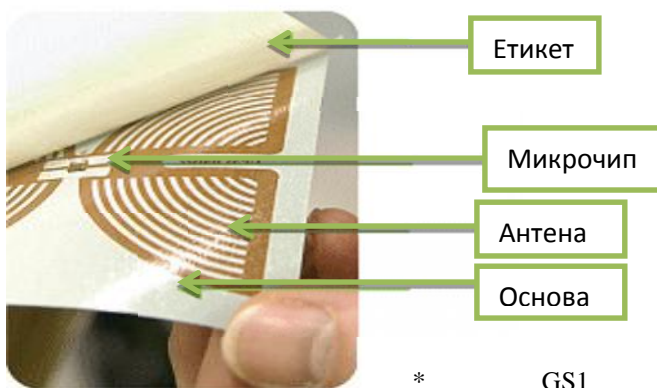
(. . 1).
3

EPC.

(RFID⁴)

EPC

(RFID-).



* GS1 / 3/4 2008 .

1. EPC

EPC

EPC

3

2.

EPC

EPC

³ MP3
⁴ RFID-Radio Frequency Identification,

EPC

EPC

RFID

(. 1)

I

EPC

RFID

1

(200

/)

* : <http://www.eprojotech.com/bul/RFID.shtml>

EPC

EPC.

0,02-0,03 / ..

EPC

0,30-0,50 / .

EPC

5.

EPC

1. RFID

RFID

, RFID

. RFID

19- .⁶

1999

Audo-ID Center

(M.I.T)

2003 .,

Audo-ID Center.

GS1⁷ GS1 US⁸.

2.

RFID

RFID

й,

⁵ : <http://www.engineersgarage.com/contribution/rfid-vs-barcodes>

⁶ : http://www.gs1bg.org/files/newsletter/Buletin_GS1_2008_3-4.pdf

⁷ GS1- , non-for-profit

⁸ GS1 US- e GS1

, ,
 ,
 , ,
 GS1 EPCglobal¹⁰. EPC ,
 ,
 GS1.

3. EPC

RFID

, -

, ,
 . ,
 RFID ,
 - Wal-Mart Metro Group:
 • Wal-Mart - .
 RFID
 2003 . 2005 100
 , RFID .
 2006 3 - ,
 16 % 11
 20% . 600
 Wal-Mart EPC ,
 1000 . 2006
 Wal-Mart 12 . . . RFID

⁹

¹⁰ EPCglobal- , non-for-profit

¹¹ . . out-of-stocks.

- Metro Group

EPC Global

RFID, Metro

RFID

EPC Class1 Gen2¹². RFID

Metro

200

Metro Cash&Carry,

Real

¹³

4. RFID

IDTechEx

RFID

2013

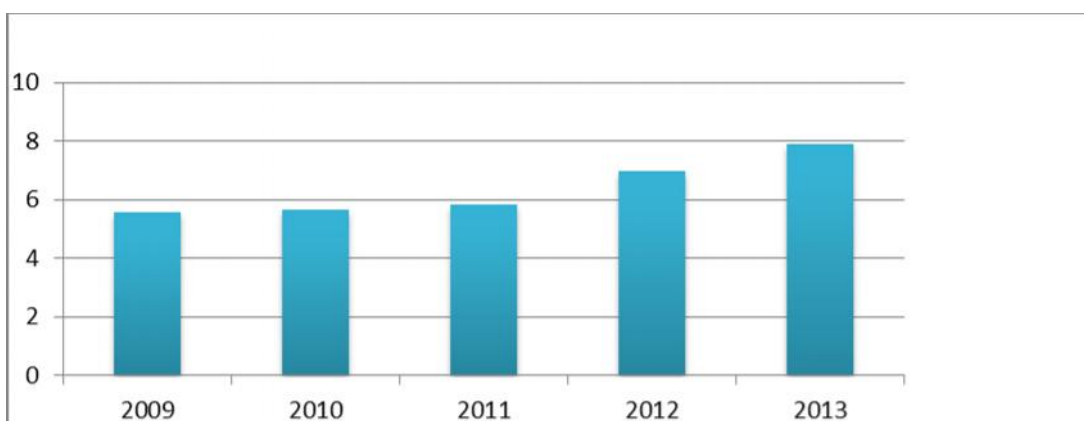
RFID

7,88

6,98

2012

(. . . 2).



2.

RFID

2009-2013

* : http://www.idtechex.com/research/reports/rfid_forecasts_players_and_opportunities_2009_2019_000226.asp

¹² EPC Class1 Gen2

¹³ : <http://propackmagazine.bg/>

2014 . 2015 .

$$\bar{T} = \sqrt[3]{RFID\ 13/RFID\ 09} \quad (1)$$

1,091.

8,59 . . . 2014 . 9,37 . . . 2015 .

(. . . 2)

2

RFID

	RFID (./\$)
2014	8,59708
2015	9,37941

RFID

IDTechEx

RFID

17%

2014 .

9,2 .

. . .

2020 .

24,5 . . .

EPC

:

•

RFID

EPC

RFID

•

RFID

EPC .

EPC

IT , . ,
1974 , ,
GS1 „Wrigley“ .
5 . , ,
RFID ,
- ,
: Wal-Mart, Metro
Group, DHL, Hewlett-Packard, Carlsberg
RFID ,
2010 . , RFID-ROI-SME,
RFID
”
RFID ,

RFID

RFID/AutoID

RFID”¹⁴.

RFID

й

RFID)

RFID

RFID

”

RFID, 10

1000 RFID”¹⁵.

- <http://www.gs1.org/aboutepc/essential>
- <http://www.engineersgarage.com/contribution/rfid-vs-barcodes>
- <http://engineering-review.bg/engineering-statii.aspx?br=68&rub=721&id=1710>
- <http://propackmagazine.bg/bg>

¹⁴ BASSCOM,

<http://engineering-review.bg/engineering-statii.aspx?br=68&rub=721&id=1710>

¹⁵ Morris A.Cohen, Wharton’s Fishman-Davidson Center for Service and Operations Management.

- <http://www.rfidjournal.com/articles/view?1609>
- http://www.idtechex.com/research/reports/rfid_forecasts_players_and_opportunities_2009_2019_000226.asp
- http://www.gs1bg.org/files/newsletter/Buletin_GS1_2008_3-4.pdf
- <http://www.eprojetch.com/bul/RFID.shtml>